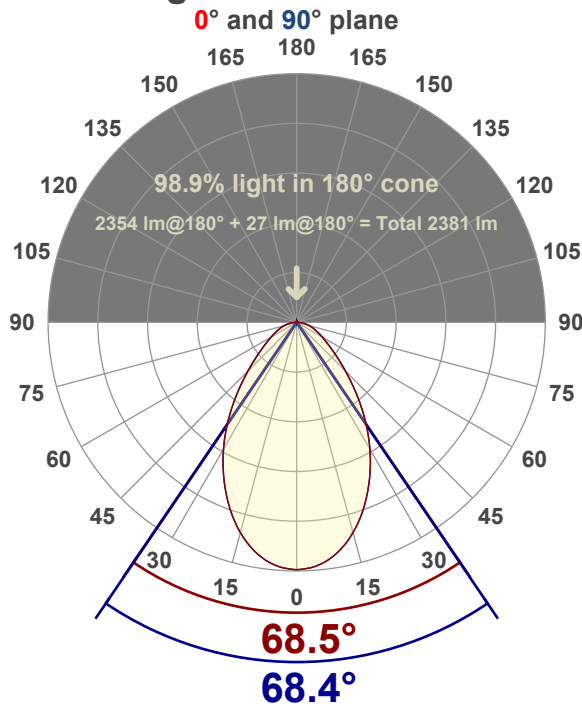


**Light efficiency:****123 Lumen/Watt****Color temperature:****3619 K****Light quality:****CRI:84.1, R<sub>g</sub>:92.1, R<sub>r</sub>:83.6****P: 3 / V: - / F: -****Output: 2354 lm****Peak: 1592 cd****Power: 19.2 W****Voltage: 119 V****Current: 0.163 A****PF: 0.99****THD: 7.63 %****Angular Distribution****Product name:****EDGE-22-WH - 35K 20W****Test Date:****6/17/2019****Beam Angle (50% of the brightness of the centre):****68.4°****Field Angle (10% of the brightness of the centre):****127.1°****Cut Off Angle (2.5% of the brightness of the centre):****164.1°****Beam Details***\*measured at centre of beam*

Mounting Height (feet)/(meter)	Lux*	Footcandles*	Beam width (feet) / (meter)
4 ft / 1.2 m	1070 lx	99 fc	5.4 ft / 1.7 m
8 ft / 2.4 m	268 lx	25 fc	10.9 ft / 3.3 m
12 ft / 3.7 m	119 lx	11 fc	16.3 ft / 5 m
16 ft / 4.9 m	67 lx	6 fc	21.8 ft / 6.6 m
20 ft / 6.1 m	43 lx	4 fc	27.2 ft / 8.3 m

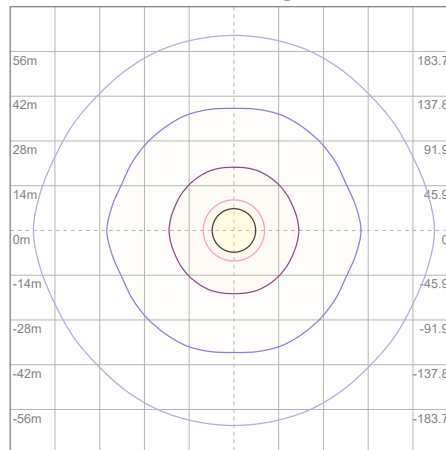
Beam center

## Photometric Testing Report

## Zonal Lumen Summary

Zone	Lumen	%Luminaire
0-30	991	42.10%
0-40	1490	63.30%
0-60	2075	88.15%
60-90	279	11.85%
70-100	122	5.18%
90-120	0.000	0.00%
0-90	2354	100.00%
90-180	0.000	0.00%
0-180	2354	100.00%

## ISO Lux Diagram



Lux at center:	171 lx
3%	5.13 lx
5%	8.55 lx
10%	17.10 lx
30%	51.30 lx
50%	85.50 lx
<b>Conditions:</b> Number of planes: 8 Lux distribution on a surface when lamp is mounted at 3.05 meters from the surface.	

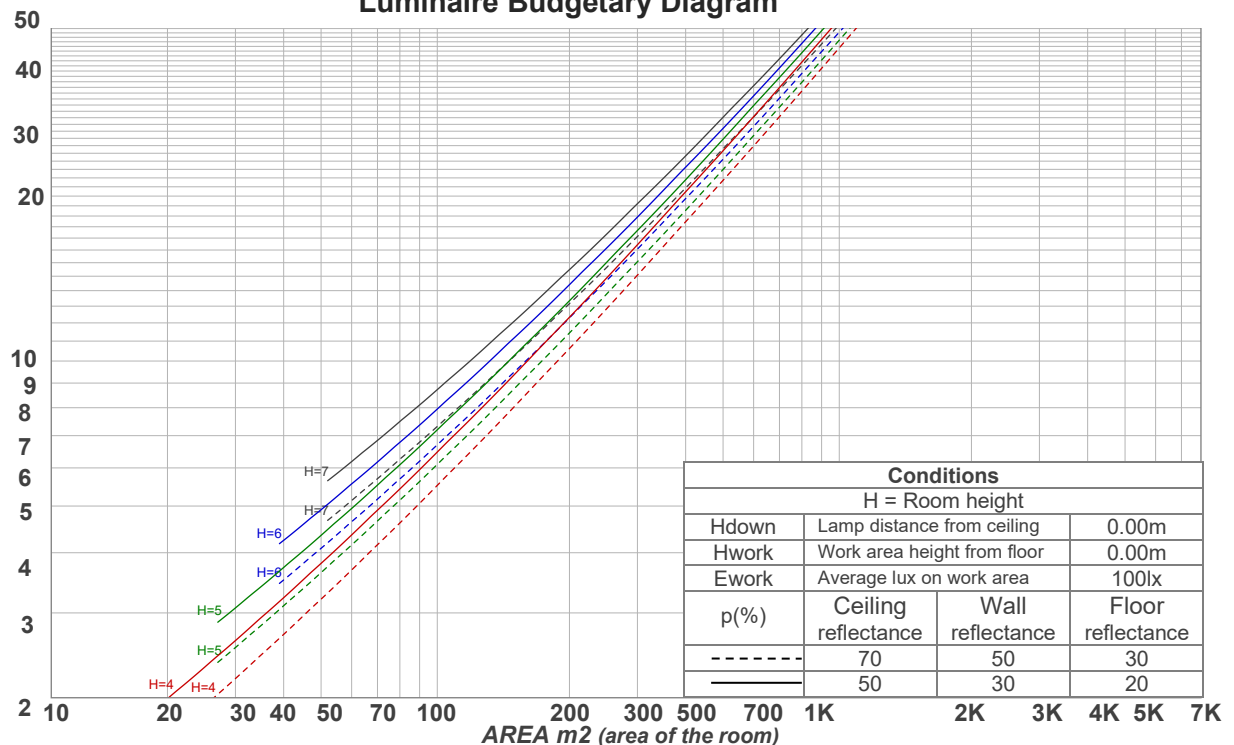
Mounting height: 3.05 meters (10 feet)

## Coefficients of Utilization

Ceiling reflectance	80				70				50			30			10			0
Wall reflectance	70	50	30	10	70	50	30	10	50	30	10	50	30	10	50	30	10	0
Floor reflectance	20	20	20	20	20	20	20	20	20	20	20	20	20	20	20	20	20	0
RCR	(RCR: Room Cavity Ratio)				Room Values are expressed as percentage of Lumens delivered to the task surface													
0	119	119	119	119	116	116	116	116	111	111	111	106	106	106	102	102	102	100
1	111	107	103	100	108	104	101	98	100	98	95	96	94	92	93	91	90	88
2	102	96	90	85	100	94	88	84	90	86	82	87	83	80	84	81	79	77
3	95	86	79	74	93	85	78	73	82	76	72	79	74	71	77	73	69	67
4	88	78	70	65	86	77	70	64	74	68	63	72	67	63	70	66	62	60
5	82	71	63	57	80	70	63	57	68	62	57	66	60	56	64	59	56	54
6	77	65	57	52	75	64	57	51	62	56	51	61	55	51	59	54	50	48
7	72	60	52	47	70	59	52	47	58	51	46	56	50	46	55	50	46	44
8	67	55	48	43	66	55	47	42	53	47	42	52	46	42	51	46	42	40
9	63	51	44	39	62	51	44	39	50	43	39	49	43	39	48	42	38	37
10	60	48	41	36	59	47	41	36	46	40	36	46	40	36	45	39	35	34

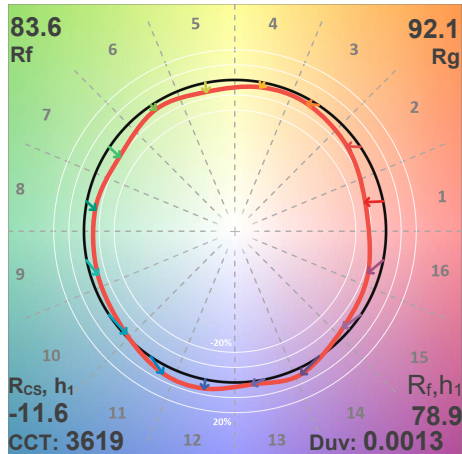
LAMPS (number of lamps)

## Luminaire Budgetary Diagram

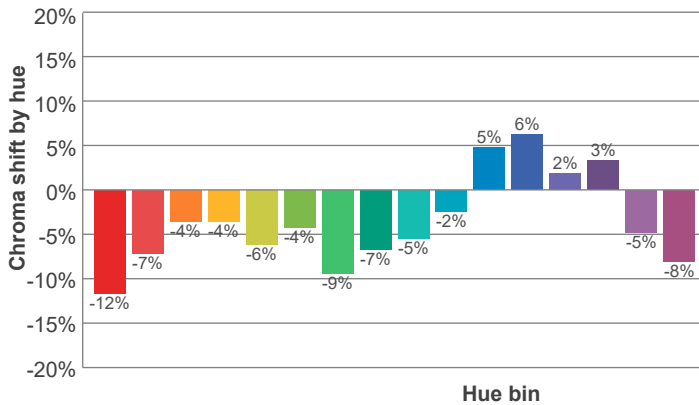
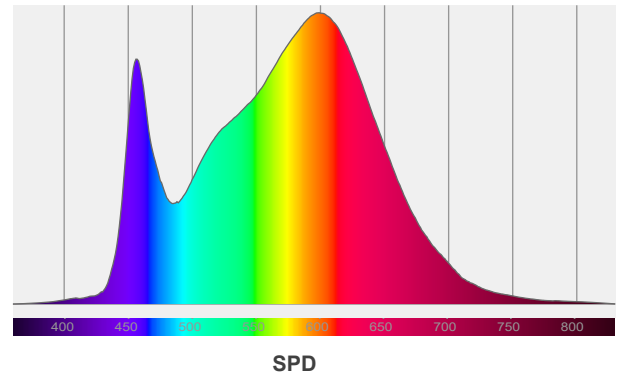
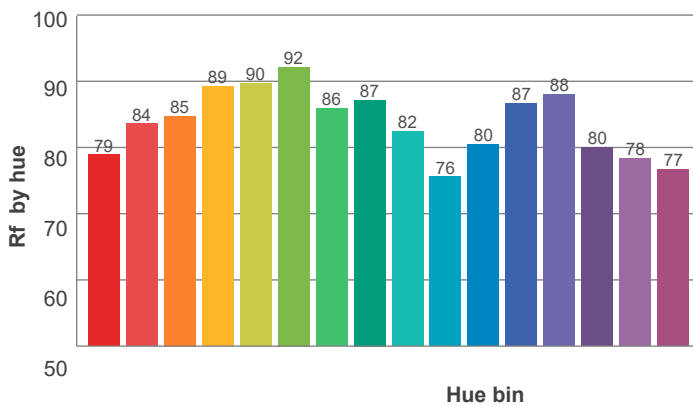
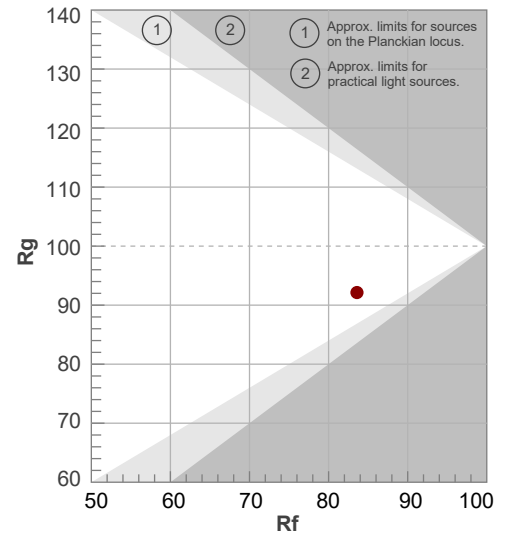


ANSI/IES TM-30-18

P: 3 / V: - / F: -



Hue Bin	R <sub>f</sub>	Shifts (%)	
		Chroma	Hue
1	79	-12%	2%
2	84	-7%	5%
3	85	-4%	7%
4	89	-4%	2%
5	90	-6%	1%
6	92	-4%	-1%
7	86	-9%	2%
8	87	-7%	4%
9	82	-5%	11%
10	76	-2%	17%
11	80	5%	13%
12	87	6%	0%
13	88	2%	-8%
14	80	3%	-16%
15	78	-5%	-13%
16	77	-8%	-10%



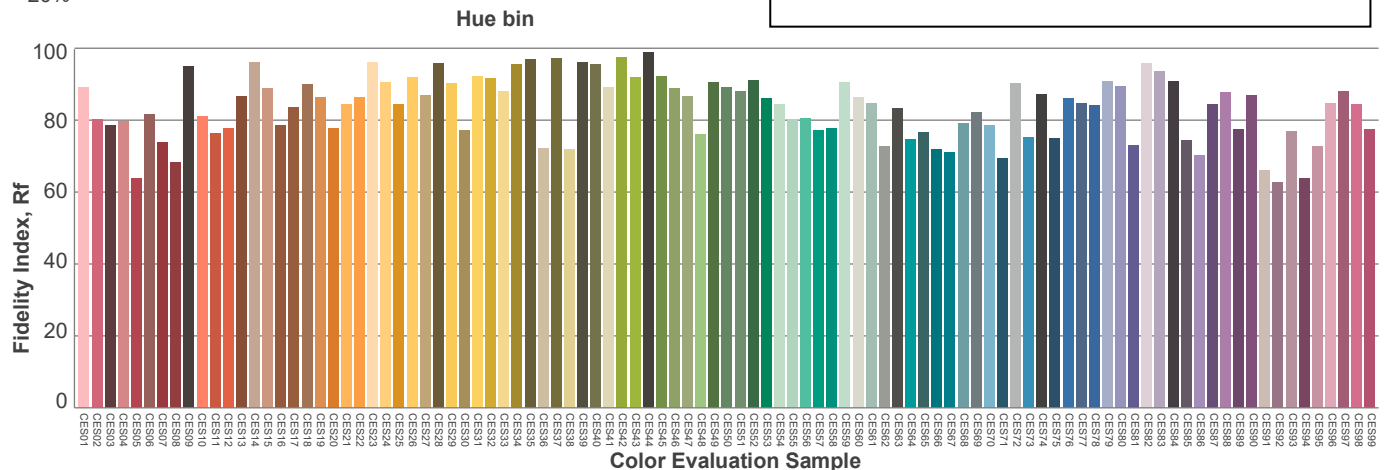
Red: 24.3%, Power=10.7mW

Blue: 14.8%, Power=21.8mW

Green: 28.6%, Power=28.9mW

UVA: 0.5%, Power=0.1mW

Dominant Wavelength: 581nm

1<sup>st</sup> Peak Wavelength: 602nm2<sup>nd</sup> Peak Wavelength: 456nm

### Glare Evaluation According to UGR

Corrected, comprehensive UGR table according to 117-1995, S/H ratio=0.25

p Ceiling		70	70	50	50	30	70	70	50	50	30
p Walls		50	30	50	30	30	50	30	50	30	30
p Floor		20	20	20	20	20	20	20	20	20	20
Room size H = mounting height above eye level  X      Y		Viewing direction at right angles to lamp axis					Viewing direction parallel to lamp axis				
2H	2H	12.1	13.1	12.3	13.3	13.6	12.2	13.1	12.3	13.4	13.6
	3H	13.0	14.0	13.4	14.3	14.5	13.0	14.1	13.4	14.3	14.5
	4H	13.5	14.4	13.9	14.7	14.9	13.5	14.5	13.9	14.8	15.0
	6H	13.9	14.8	14.2	15.1	15.4	14.0	14.8	14.3	15.1	15.5
	8H	14.0	14.9	14.4	15.2	15.6	14.1	15.0	14.5	15.3	15.7
	12H	14.1	14.9	14.5	15.3	15.7	14.2	15.0	14.6	15.3	15.8
4H	2H	12.4	13.4	12.8	13.6	13.9	12.4	13.4	12.8	13.7	13.9
	3H	13.7	14.5	14.0	14.8	15.3	13.7	14.5	14.1	14.8	15.3
	4H	14.2	15.0	14.7	15.4	15.9	14.2	15.0	14.7	15.4	15.9
	6H	14.7	15.5	15.2	15.8	16.2	14.8	15.5	15.3	15.9	16.2
	8H	14.9	15.6	15.4	16.0	16.3	15.0	15.6	15.5	16.0	16.4
	12H	15.1	15.6	15.5	16.0	16.5	15.1	15.6	15.6	16.1	16.5
8H	4H	14.5	15.1	15.0	15.5	15.9	14.5	15.1	15.0	15.5	15.9
	6H	15.1	15.6	15.6	16.1	16.6	15.2	15.7	15.7	16.1	16.7
	8H	15.4	15.9	16.0	16.4	17.0	15.5	15.9	16.0	16.4	17.0
	12H	15.6	16.0	16.2	16.5	17.1	15.7	16.0	16.3	16.5	17.1
12H	4H	14.5	15.0	14.9	15.4	15.9	14.5	15.0	15.0	15.4	15.9
	6H	15.2	15.6	15.7	16.2	16.8	15.3	15.7	15.8	16.2	16.8
	8H	15.5	15.9	16.1	16.4	17.0	15.6	15.9	16.1	16.4	17.0
Variation of the observer position for the luminaire distance S											
S = 1.0H		0.2 / -0.3					0.2 / -0.3				
S = 1.5H		0.6 / -0.6					0.6 / -0.6				
S = 2.0H		1.1 / -0.9					1.1 / -0.9				
Corrected glare indices referring to 2354 lm total luminous flux											

**IESNA TM-15-07**

**Luminaire Classification System  
For Outdoor Luminaires**

**BUG rating  
B2 U0 G1**

**UL 90-100°**

0 lm  
0%

**BVH 80-90°**

12.9 lm  
0.5%

**BH 60-80°**

117.1 lm  
4.9%

**BM 30-60°**

524 lm  
22%

**BL 0-30°**

523.2 lm  
22%

**UH 100-180°**

0 lm  
0%

**UL 90-100°**

0 lm  
0%

**FVH 80-90°**

12.9 lm  
0.5%

**FH 60-80°**

117.1 lm  
4.9%

**FM 30-80°**

524 lm  
22%

**FL 0-30°**

523.2 lm  
22%

